



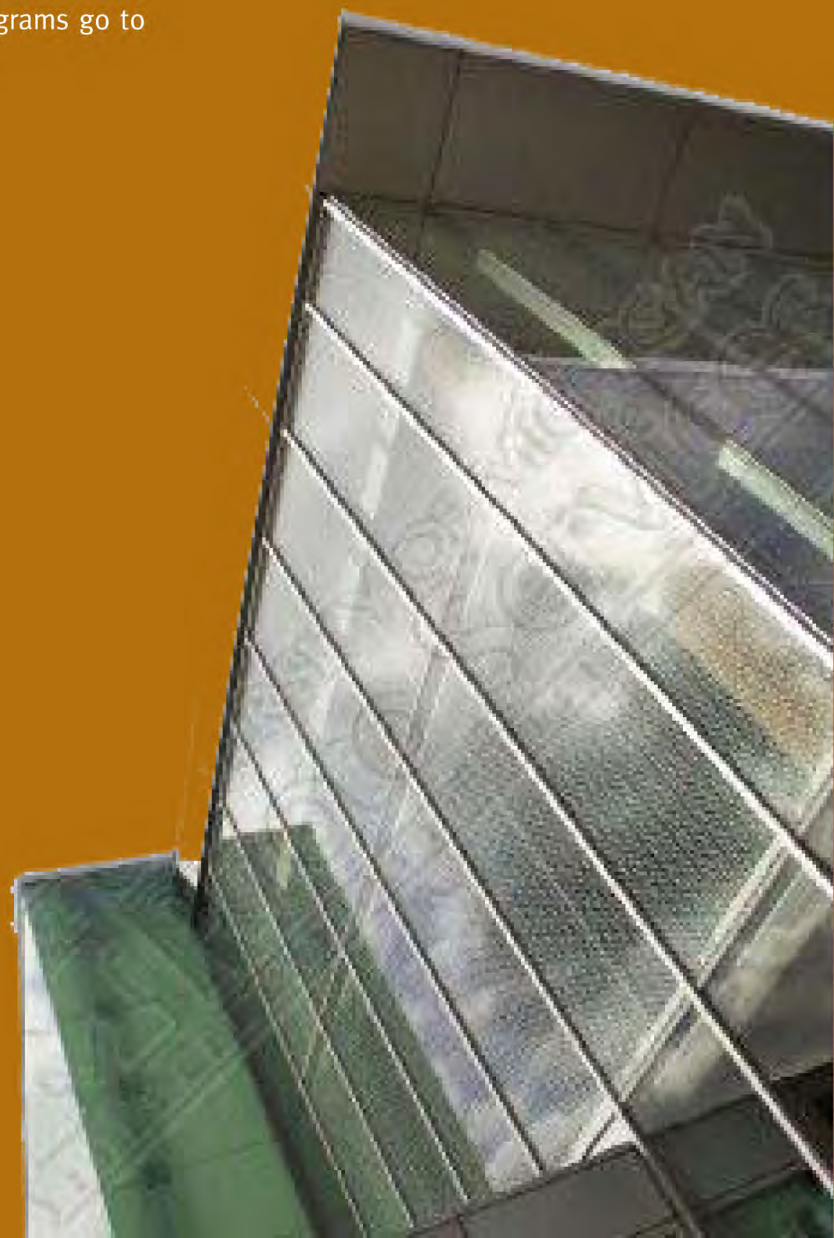
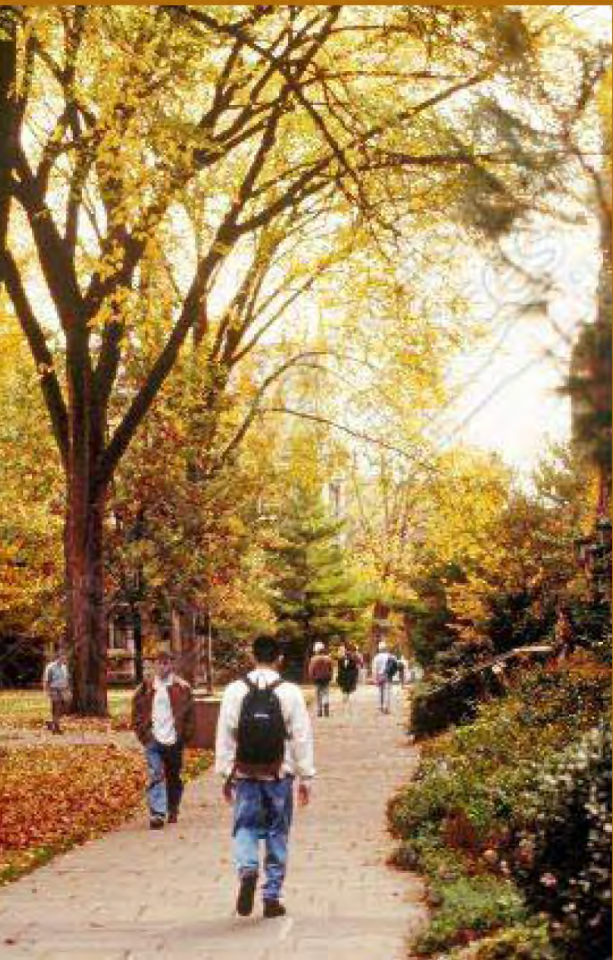
DISCOVER
the Michigan
Difference

EXPLORE

THE GRADUATE EXPERIENCE

At the University of Michigan, the admissions process for most graduate degree programs is administered by the Rackham Graduate School. You'll find that the deans and staff at the Graduate School serve the interests of prospective students, current students, faculty and alumni in many ways.

For more information about programs of study, admissions, fellowships, and the wide range of support programs go to www.rackham.umich.edu.



COMPETITIVE

ON A GLOBAL SCALE



As a graduate student at the University of Michigan, you will join one of the world's most distinguished academic institutions. Ours is a vibrant community of renowned faculty and intellectually adventurous students who learn in an environment of limitless possibilities. Here you will find both an extraordinary number of top-ranked, innovative programs and a fundamental commitment to supporting a diverse community of exceptional scholars, researchers, and future leaders.

Graduate study at the University of Michigan means you will engage in research that informs and shapes the world around us. Dozens of interdisciplinary programs, pioneering centers, and world-famous institutes exemplify the breadth and depth of intellect, talent and creativity at the University of Michigan. There are over 130 degree programs spanning every area of interest.

Forty-five computing sites, twenty-four libraries, 1.8 million square feet of research lab space, nine museums, six astronomical observatories, and biological field stations are just some of the resources. They make possible the transformative combination of vision and expertise that are a hallmark of the University of Michigan.

We invite you to explore our graduate degree programs, our resources, our people, and our community. Discover the Michigan Difference for yourself.





DIVERSITY: EXCELLENCE IN EDUCATION



As a U-M graduate student, you will live in a community that respects who you are and encourages you to fulfill your promise.

The University of Michigan has long embraced a deep institutional commitment to diversity as a central part of our mission to ensure the excellence of graduate education. The role of diversity in higher education is both essential and compelling. Research and experience have shown that only by bringing together people from many different cultures, traditions, and backgrounds can we fully prepare graduate students to engage with the challenges and opportunities of today's world.

The quality of our academic programs is enhanced by the rich and varied contributions of students and faculty who approach problems from different perspectives. Many prominent scholars are attracted to our community because they can teach, study, and conduct research with others who challenge their way of looking at the world.

At the University of Michigan we believe it is the responsibility of those in higher education to prepare culturally competent citizens and leaders for the next generation. Prepare for the future, to work and live with people from every part of the globe, by studying in this culturally invigorating environment.



A CAMPUS IN A VIBRANT CITY

Ann Arbor combines the comforts and convenience of a small city with the excitement of a cosmopolitan center, providing a quality of life that regularly places it on many national “best places to live” lists.

The city offers a lively year-round cultural calendar. Both in the city and on campus you will find professional theatre companies, art galleries, comedy clubs, and every kind of music concert and film. The thriving arts scene is typified by nationally-known annual events including Ann Arbor’s Art Fair, Film Festival, and Folk Festival. And don’t forget the wide range of spectator sports!

The wealth of city parks and recreation facilities provide plenty of opportunity for exercise and relaxation. Nearby lakes, rivers, and woods are great for hiking, boating, and bicycling.

Getting around is easy with University and city buses, all of which are wheelchair accessible. Here, you are only 25 minutes from a major international airport. Chicago and Toronto are only four to five hours away by train, car or bus; Detroit is less than an hour away.

At U-M you’ll work hard. But when you’re ready to unwind, Ann Arbor with all it has to offer will be waiting.





© 2007 REGENTS OF THE UNIVERSITY

Julia Donovan Darlow, Ann Arbor
Laurence B. Deitch, Bingham Farms
Olivia P. Maynard, Goodrich
Rebecca McGowan, Ann Arbor
Andrea Fischer Newman, Ann Arbor
Andrew C. Richner, Grosse Pointe Park
S. Martin Taylor, Grosse Pointe Farms
Katherine E. White, Ann Arbor
Mary Sue Coleman, ex officio

The University of Michigan, as an equal opportunity/affirmative action employer, complies with all applicable federal and state laws regarding nondiscrimination and affirmative action, including Title IX of the Education Amendments of 1972 and Section 504 of the Rehabilitation Act of 1973. The University of Michigan is committed to a policy of nondiscrimination and equal opportunity for all persons regardless of race, sex*, color, religion, creed, national origin or ancestry, age, marital status, sexual orientation, disability, or Vietnam-era veteran status in employment, educational programs and activities, and admissions. Inquiries or complaints may be addressed to the Senior Director for Institutional Equity and Title IX/Section 504 Coordinator, Office of Institutional Equity, 2072 Administrative Services Building, Ann Arbor, Michigan 48109-1432, 734-763-0235, TTY 734-647-1388. For other University of Michigan information call 734-764-1817.

*Includes gender identity and gender expression